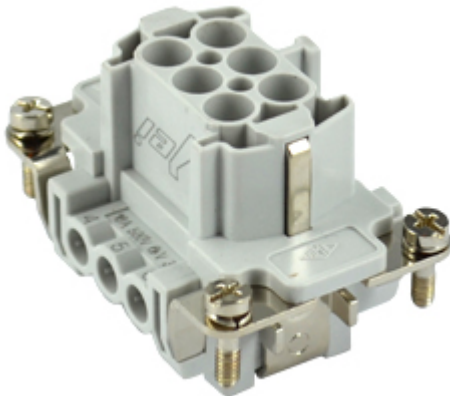




Part number

# JNEF 06



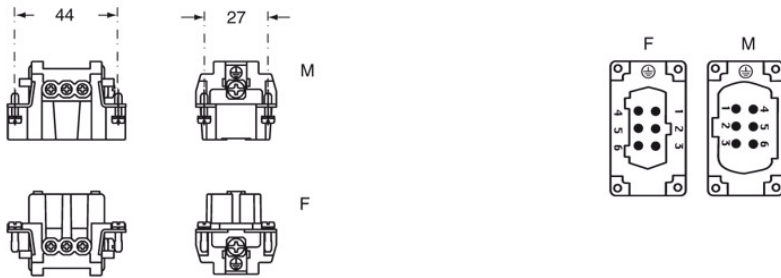
Product description		Approvals / Standards	
Model	female insert	Reference standard	EN 61984 (2001-11)
Version	screw terminal connections	Quality mark	 EAC
Series	JNE	Conformity	CQC, CE
Product type	with female contacts	General ordering information	
Variant	with plate	EAN13 code	8015747204378
Family	JEI@ inserts	Tariff number	85369095
Size	size "44.27"	Packaging Information	
N. of poles	6 poles + 	Packaging length	220,00 mm
Technical data		Packaging height	210,00 mm
Current	16 A (D.C.)	Packaging width	230,00 mm
Voltage	500 V	Packaging weight	5,27 kg
Rated impulse withstand voltage	6kV	Packaging volume	10,63 dm <sup>3</sup>
Pollution degree	3	Packaging description	Carton box
Frequency	d.c.	Packaging quantity	100 Pcs
Wire cross-section	0,50 mm <sup>2</sup> - 4,00 mm <sup>2</sup>	Packaging EAN code	8015747204491
AWG size	20 - 12	Sub-packaging weight	0,53 kg
Operating temperature range (min, max)	-40°C ... +125°C	Sub-packaging description	Carton
Contact type	tin plated	Sub-packaging quantity	10 Pcs
Mating cycles	≥ 200	Sub-packaging EAN barcode	8015747204507
IP degree of protection	IP20 without enclosure; IP65/IP66/IP67/IP68 with enclosure		
PE wire cross-section	0,14 - 4 mm <sup>2</sup> ; AWG 20 - 12		
Further technical details			
Characteristics according to EN 61984	16A 500V 6kV 3; 16A 400/690V 6kV 2		
Insulation resistance	≥ 10 GΩ		
Rated voltage according to UL/CSA	600V		
UL 94 flammability rating	V-0		
Weight	56,00 g		

Part number

# JNEF 06



Catalogue drawings



## Notes

- for non-prepared conductors
- inserts with plate for section conductors:  
0.5 ÷ 4 mm<sup>2</sup> - AWG 20 ÷ 12
- conductors stripping length: 7 mm
- terminal screw torque: 0.5 Nm

